



ACCESSIBILITY REPORT

Brautarholt 10-14
105 Reykjavík

ARRIVAL AND PUBLIC AREAS MAIN ENTRANCE/ ONLY ENTRANCE FOR GUESTS



Arriving at the hotel takes place through the front door at Brautarholt 10, Reykjavík. There are two pair of slide door in the entrance, each one 138 cm wide. The outer door has 2,5 cm high door step.



There are no steps to enter the building or get around the ground floor.

There is a handicap parking slot right next to the entrance



Through the entrance, the reception is right there, on the left-hand side.

Once you have accessed the lobby / reception area, you will have access to the restaurant, seating area, breakfast area, meeting room, gym and ground floor restrooms without any steps.

STAIR CASE AND ELEVATOR



In front of the staircase and elevator area is a 3 cm high door steps with slope on each side. The door is 136 cm wide.



The elevator stops on each floor. It has 1 cm door step and the entrance is 90 cm wide.

The elevator itself is 135 cm wide and 140 cm deep.



The elevator stops on each of the four floors.

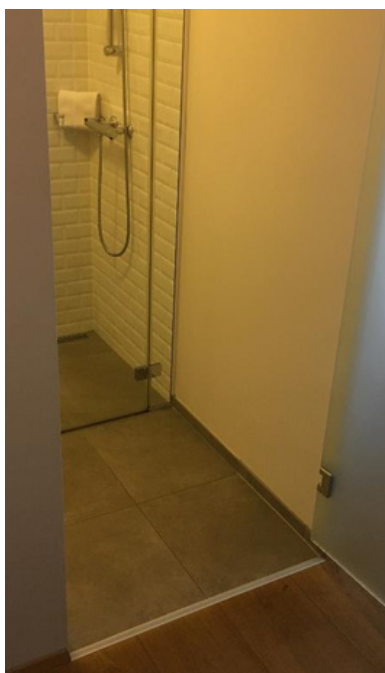
The door to each hallway is 110 cm wide and has 1 cm door step.

ROOMS ENTRANCE TO A ROOM



Door step entering the rooms are 2 cm high and the door width is 90 cm.

Bathroom and shower



Inside the rooms are no door steps.

The bathroom door is 90 cm wide.

The shower in the handicap accessible room is 90 * 90 cm

For any questions or inquiries please contact the hotel directly.

Tel: +354 519 7300

E-mail: eyja@guldsmedenhotels.com